

# Holiday Inn Runcorn Hotel

Wood Lane, Beechwood, Runcorn, Cheshire, WA7 3HA

03333 209 350 (tel:03333 209 350)

Visit website (<https://www.hiruncornhotel.co.uk>)



## About this venue

For WhatPub information about the Holiday Inn Runcorn Hotel, please [click here \(opens new tab\) \(https://whatpub.com/pubs/HLT/11357\)](https://whatpub.com/pubs/HLT/11357)

## Access Guide

### Hotel Summary

#### Hotel Information

[View](#)

- The hotel has its own parking facilities.
- The hotel has 153 rooms in total.
- There is an/are accessible room(s) within the hotel.
- There is/are 4 accessible room(s) with a wet room/wheel in shower.
- There is an/are adjoining room(s) available for the accessible room(s).
- There is an/are adjoining room(s) available for the standard room(s).

#### Additional Accessibility Aids

[View](#)

- Vibrating pillows with flashing beacons are available on request.
- Bed raisers are not available on request.
- Bath mats are available on request.

#### Conference and Meeting Facilities

[View](#)

- Conference/meeting facilities are available.
- The conference/meeting facilities are located on the third floor.

## Getting Here

### By Road

- The hotel is located on the outskirts of Runcorn, just off Junction 12 of the M56. The hotel is located on Wood Lane, off the A56.
- This hotel has a car park which is free for all users.

### **By Bus**

**View**

- There is not a bus stop within 150 metres of the hotel.
- The nearest bus stop is located on the A56, approximately 350 metres from the hotel.
- **[For more information on buses in the North West please click here \(opens new tab\) \(https://www.arrivabus.co.uk/north-west\)](https://www.arrivabus.co.uk/north-west)**

### **By Train**

**View**

- The nearest Railway Station is Runcorn.
- Runcorn Station is situated in the centre of Runcorn, located approximately 4 miles from the hotel. There are bus and taxi routes to the hotel from the station.
- **[For more information on National Rail please click here \(opens new tab\) \(http://www.nationalrail.co.uk/stations/run/details.html\)](http://www.nationalrail.co.uk/stations/run/details.html)**

## **Getting Help and Assistance**

- There is a member of staff available for help and assistance.
- There is not a member of staff trained in British Sign Language.
- Staff receive disability awareness/equality training.
- Staff do not receive deaf awareness training.
- British Sign Language interpreters cannot be provided on request.
- The alternative formats documents can be provided in include: large print on request.
- There is an assistance dog toilet or toileting area at the venue/near by.
- The assistance dog toilet or toileting area is located on the grass areas surrounding the hotel.
- Water bowls for assistance dogs are available.
- There are not mobility aids available.

## **Parking**

### **Photos**



### **Parking**

**View**

- The hotel does have its own parking facilities.
- The car park is located at the front and rear of the hotel.
- The car park type is open air/surface.
- The car park does not have a height restriction barrier.
- The car park does have a barrier control system.

- The car park surface is tarmac.
- Clearly marked/signposted parent and child parking bays are not available.
- All parking spaces are provided on a first come first served basis.
- There is an overflow car park for staff and visitors.

### **Blue Badge Parking**

**View**

- There is a/are Blue Badge parking bay(s) available.
- The Blue Badge bay(s) is/are clearly marked and signposted.
- There is/are 5 designated Blue Badge parking bay(s) within the car park.
- The dimensions of the designated Blue Badge parking bay(s) surveyed are 364cm x 602cm (11ft 11in x 19ft 9in).
- Parking spaces for Blue Badge holders do not need to be booked in advance.

### **Paying**

**View**

- There are not parking charges for the car park.

### **Access from the Car Park**

**View**

- The route from the car park to the entrance is accessible to a wheelchair user with assistance.
- Assistance may be required because there is/are slopes/ramps.
- The entrance is clearly visible from the car park.
- The surface on the approach to the entrance is block paving.
- There is not a road to cross between the car park and the entrance.
- There is no tactile paving on dropped kerbs between the car park and the entrance.
- The nearest designated Blue Badge parking bay is approximately 24m (26yd 9in) from the side accessible entrance.

### **Drop-off Point(s)**

**View**

- There is a/are clearly marked drop-off point(s).
- The drop-off points(s) is/are located in front of the side accessible entrance and in front of the main entrance.
- The route from the drop-off point(s) to the entrance is accessible to a wheelchair user with assistance.
- Assistance may be required because there is/are slopes/ramps.

### **Comments**

**View**

- Please register your car's registration at reception desk
- There is a barrier to enter the front car park.
- The front barrier raises automatically.
- There is a barrier to exit the car park.
- The exit barrier is operated by a keypad.
- The code for the exit barrier is obtained from a member of staff at reception.

## **Step(s) (Car Park to Main Entrance)**

 **Photos**



- There is a/are step(s) located leading from the car park to the main entrance.
- The step(s) is/are used to access The steps lead from the car park and access the area in front of the main entrance.
- There is/are 6 step(s).
- The step(s) is/are not clearly marked.
- The height of the step(s) is/are between 15cm and 18cm.
- The going of the step(s) is/are not between 30cm and 45cm.
- There is a/are handrail(s) at the step(s).
- The handrail(s) is/are in the centre of the step(s).
- Handrails are at the recommended height (90cm-100cm).
- Handrails do cover the flight of stairs throughout its length.
- Handrails are easy to grip.
- Handrails do not extend horizontally beyond the first and last steps.

### **Comments**

**View**

- These steps can be avoided by using the drop off point at the main hotel entrance.

## **Outside Access (Main Entrance)**

### **Photos**



### **Entrance**

**View**

- This information is for the entrance located at the front of the hotel.
- The entrance area/door is clearly signed.
- There is stepped access at this entrance.
- There is a canopy or recess which provides weather protection at this entrance.
- There is a dark mat or floor marking at this entrance that might be perceived as a hole.
- The entrance door(s) does not/do not contrast visually with its immediate surroundings.
- The bell/buzzer is not in a suitable position to allow wheelchair users to gain access.
- The height of the bell/buzzer is 140cm (4ft 7in).
- The main door(s) open(s) automatically.
- The door(s) is/are double width.

- The width of the door opening is 194cm.
- There is a second set of doors.
- The door(s) open(s) automatically.
- The door(s) is/are double width.
- The width of the door opening is 185cm.
- There is a member of staff available for assistance at this entrance.

### **Step(s)**

**View**

- The step(s) is/are located in front of the entrance.
- There is/are 7 step(s).
- The step(s) is/are clearly marked.
- The height of the step(s) is/are between 15cm and 18cm.
- The going of the step(s) is/are not between 30cm and 45cm.
- There is a/are handrail(s) at the step(s).
- The handrail(s) is/are on both sides of the step(s).
- Handrails are at the recommended height (90cm-100cm).
- Handrails do not cover the flight of stairs throughout its length.
- Handrails are easy to grip.
- Handrails do not extend horizontally beyond the first and last steps.

## **Outside Access (Side Entrance)**

### **Photos**



### **Entrance**

**View**

- This information is for the entrance located at the right side of the hotel.
- The entrance area/door is clearly signed.
- There is ramped/sloped or stepped access at this entrance.
- There is not a canopy or recess which provides weather protection at this entrance.
- There is a dark mat or floor marking at this entrance that might be perceived as a hole.
- The entrance door(s) does not/do not contrast visually with its immediate surroundings.
- The bell/buzzer is not in a suitable position to allow wheelchair users to gain access.
- The height of the bell/buzzer is 138cm (4ft 6in).
- The main door(s) open(s) automatically.
- The door(s) is/are double width.
- The width of the door opening is 218cm.
- There is a second set of doors.
- The door(s) open(s) automatically.

- The door(s) is/are double width.
- The width of the door opening is 184cm.
- There is a member of staff available for assistance at this entrance.

### **Ramp/Slope**

**View**

- The ramp/slope is located to the left as you face the entrance.
- The gradient of the ramp/slope is steep.
- The ramp/slope is permanent.
- There is not a level landing at the top of the ramp/slope.
- There is a/are handrail(s) at the ramp.
- The handrail(s) is/are on both sides of the ramp.
- The width of the ramp/slope is 115cm (3ft 9in).
- The ramp/slope does bypass the step(s).

### **Step(s)**

**View**

- The step(s) is/are located in front of the entrance.
- There is/are 1 step(s).
- The step(s) is/are clearly marked.
- The height of the step(s) is/are not between 15cm and 18cm.
- The height of the step(s) is/are 19cm.
- The going of the step(s) is/are not between 30cm and 45cm.
- There is not a/are not handrail(s) at the step(s).

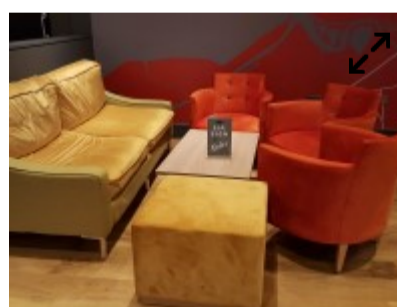
### **Comments**

**View**

- The bell is located on the wall to the left between the first and second set of doors (shown in photograph 2).

## **Reception**

### **Photos**



---

### **Reception**

**View**

- The reception point is located along the corridor and to the right as you enter via the side entrance.
- The reception point is approximately 15m (16yd 1ft) from the side entrance.
- Clear signage for the reception area/desk is visible from the entrance.
- There is step free access to the reception point.
- There is a clear unobstructed route to the reception point.
- There are no windows, TVs, glazed screens or mirrors behind the reception point which could adversely affect the ability of someone to lip read.



- The counter is placed in front of a plain background.
- The lighting levels at the reception point are good.
- There is sufficient space to write or sign documents on the counter.
- There is not a lowered section of the counter.
- The counter is staffed.
- Clipboards can be provided to anyone who is unable to use the desk.
- There is not a hearing assistance system at the reception point.
- Signs and universally accepted symbols or pictograms, indicating lifts, stairs, WCs, circulation routes and other parts of the building are not provided in the reception area.
- The type of flooring in the reception area is carpet and laminate.

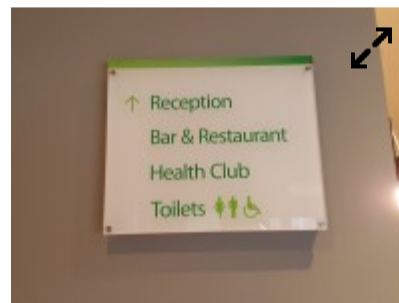
### **Reception Seating Area**

**View**

- There is a waiting area close to the reception point.
- Access to the waiting area is unobstructed.
- There is sufficient space for a wheelchair user to use the waiting area.

## **Getting Around**

### **Photos**




---

### **Access**

**View**

- There is step free access throughout the majority of the building, via lift.
- There is a slight slope, with no handrails, for access to the bar.
- The ramp/slope does bypass the step(s).
- There is/are 3 clearly marked step(s), with no handrails, for access to the bar.
- The height of the step(s) is/are between the recommended 15cm and 18cm.
- The going of the step(s) is/are not between the recommended 30cm and 45cm.
- The ramp is located to the right of the bar and is shown in photographs 1 and 2. The steps are located in front of the bar area and are shown in photographs 3 and 4.
- There is/are 4 clearly marked step(s), with a handrail on the left going up, for access to the Helsby Room and the Aston Room.
- The height of the step(s) is/are between the recommended 15cm and 18cm.
- The going of the step(s) is/are between the recommended 30cm and 45cm.
- The steps are located on the left just past the reception foyer and access the Helsby and Aston meeting rooms and are shown in photographs 5 and 6. Other meeting rooms with level access are available.
- There is a slight ramp, with no handrails, for access to the standard male toilets .
- The width of the ramp/slope is 80cm (2ft 7in).
- The slope is located in the entrance to the standard male toilets in the lobby to the right as you enter via the side entrance and is shown in photographs 7 and 8.

## **Circulation**

**View**

- There are doors in corridors/walkways which have to be opened manually.
- The type of flooring in corridors/walkways is laminate, wood, carpet and tiles.
- There is some flooring in corridors/walkways which includes patterns or colours which could be confusing or look like steps or holes to some people.
- There is some flooring in corridors/walkways which is shiny and could cause issues with glare or look slippery to some people.
- There is high colour contrast between the walls and floor in the majority of corridors/walkways.
- There is a mixture of seating with and without armrests at regular intervals.
- The lighting levels are varied.
- Access to other floors/levels is via stairs and lift.

## **Signage**

**View**

- Wayfinding signage is provided.
- The colour, design and typeface of signs is consistent throughout the building.

## **Audio**

**View**

- This venue does play background music in public areas.
- Music is played in the reception foyer and the restaurant/bar.
- There is not a hearing assistance system in the public areas of the building.

## **Comments**

**View**

- This hotel is built on a hill.
- The hotel entrances give direct access to the third floor.
- Although the accessible rooms are on the third floor there is level access from the hotel entrances.
- There is a level walkway to the rear of the hotel.
- The corridor width of the walkway is 118cm and is shown in photographs 11 and 12 .

## **Eating and Drinking (Hub Bar's)**

### **Photos**



- 
- The following information is for the bar.
  - The bar is located on the third floor, just past the reception foyer.
  - There is ramped/sloped or stepped access to the bar.
  - Full table service is not available.
  - Food and/or drinks are ordered from the service counter.
  - Food and/or drinks can be brought to the table.



- The height of the service counter is high (110cm+) .
- There is not a lowered section of the counter.
- There is not a hearing assistance system .
- There is step-free access within the bar.
- There is ample room for a wheelchair user to manoeuvre.
- This area does play background music.
- The type of flooring in this area is carpet, tiles and wood.
- No tables are permanently fixed.
- Some chairs are permanently fixed.
- Some chairs have armrests on both sides.
- The nearest table is approximately 3m from the entrance/opening.
- The nearest table is approximately 2m from the till/counter.
- The distance between the floor and the lowest table is 38cm.
- The distance between the floor and the highest table is 99cm.
- The standard height for tables is 72cm.
- Takeaway cups are available.
- Takeaway cutlery is not available.
- Drinking straws are available.
- There are hand held menus and menu boards/signs available.
- Menus are not available in Braille.
- Menus are not available in large print.
- Picture menus are not available.
- Menus are clearly written.
- Menus are presented in contrasting colours.
- The type of food served here is hot and cold meals and snacks.
- The lighting levels are good.

### **Comments**

**View**

- The bar is on a raised area.
- There is seating in front of the raised area that can be used and overcomes the ramp/steps (shown in photograph 6).
- QR ordering also available to order food and drink.

## **Eating and Drinking (Restaurant)**

### **Photos**



- 
- The following information is for the restaurant.
  - The restaurant is located on the third floor, to the right just past the reception lobby.

- There is step-free access to the restaurant.
- Full table service is available.
- There is not a hearing assistance system .
- There is step-free access within the restaurant.
- There is ample room for a wheelchair user to manoeuvre.
- This area does play background music.
- The type of flooring in this area is tiles and laminate.
- No tables are permanently fixed.
- Some chairs are permanently fixed.
- No chairs have armrests on both sides.
- The nearest table is approximately 4m from the entrance/opening.
- The standard height for tables is 73cm.
- Takeaway cups are available.
- Takeaway cutlery is not available.
- Drinking straws are available.
- There are hand held menus available.
- Menus are not available in Braille.
- Menus are not available in large print.
- Picture menus are not available.
- Menus are clearly written.
- Menus are presented in contrasting colours.
- The type of food served here is hot and cold meals and snacks.
- The lighting levels are good.

#### **Comments**

**View**

- QR ordering now available.

## **Accessible Room(s) (Rooms 309, 311, 315 and 317)**

### **Photos**



### **Accessible Room Information**

**View**

- The details in this section relates to the accessible room(s) with a wet room/wheel in shower.
- This type of accessible room is located on the third floor.
- There is step free access to this type of accessible room.
- All accessible rooms of this type have similar specifications.
- The ensuite transfer space for the accessible rooms varies from left to right.
- Guests need to open a door between the entrance and the room(s).

- The narrowest width of the corridor leading to the room surveyed was 147cm.

## **Bedroom Features**

**View**

- The accessible room surveyed is located on the third floor, in the rear corridor of the hotel.
- The accessible room surveyed at the time of the visit was Room 311.
- There is step free access to the accessible room surveyed.
- There is numbered signage on or near the accessible room door.
- The door is manual with a key card lock.
- The fob/card reader height is 117cm.
- The width of the door is 87cm (2ft 10in).
- There are lowered spy holes available.
- The bed type is double.
- The bed height is not adjustable.
- The height of the bed is 58cm (1ft 11in).
- The measurement between the bed base and floor is 13cm (5in).
- The bed is moveable.
- The room does have an unobstructed minimum turning space of 150cm x 150cm next to the bed.
- The height of the desk is 76cm.
- The desk is not height adjustable.
- The desk knee recess has the recommended dimensions of 70cm (height) x 50cm (depth).
- The room surveyed had a height adjustable chair with armrests and an armchair.
- Wardrobes have not been adapted to allow use from a seated position.
- Light switches are between 75cm and 120cm (4ft) from floor level.
- Electric sockets are between 40cm and 100cm (4ft) from floor level.
- The window control type(s) for the room is a/are extended lever(s).
- There is an emergency alarm in the room.
- The emergency pull cord alarm in the room is within reach and fully functional.
- The emergency alarm in the room rings to reception.
- There is not a flashing fire alarm beacon within the room.
- The type of flooring is carpet.

## **Ensuite Facilities**

**View**

- The ensuite door opens outwards.
- The door weight is heavy.
- The door is locked by a twist lock.
- The width of the door to the ensuite is 87cm (2ft 10in).
- The dimensions of the ensuite are 137cm x 251cm (4ft 6in x 8ft 3in).
- The ensuite does not have an unobstructed minimum turning space of 150cm x 150cm in front of the toilet seat.
- The ensuite has a non slip floor.
- There is an emergency alarm within the ensuite.
- The emergency pull cord alarm in the ensuite is within reach and fully functional.
- The emergency alarm in the ensuite rings to reception.
- There is a flashing fire alarm beacon within the ensuite.
- Disposal facilities are available.

- There is a/are pedal waste paper bin disposal units.
- There is a mirror.
- The mirror is not placed at a lower level or at an angle for ease of use.
- There is not a shelf immediately next to or behind the toilet.
- There is a wash basin.
- The wash basin cannot be reached from seated on the toilet.
- The wash basin is not placed higher than 74cm (2ft 5in).
- The height of the wash basin is 71cm.
- There are vertical wall-mounted grab rails on both sides of the wash basin.
- The tap type is lever.
- There is a mixer tap.
- There is not a soap dispenser.

### **Toilet Details**

**View**

- The height of the toilet seat above floor level is 47cm (1ft 7in).
- The toilet has a wall which acts as a backrest.
- There is a lateral transfer space.
- As you face the toilet pan the transfer space is on the left.
- The lateral transfer space is 94cm (3ft 1in).
- There is a flush, however it is not on the transfer side.
- There is a spatula type lever flush.
- There is a dropdown rail on the transfer side.
- There is a/are wall-mounted grab rail(s) available.
- As you face the toilet, the wall mounted grab rails are on the right.
- There is not a vertical wall-mounted grab rail on the transfer side.
- There is a horizontal wall-mounted grab rail on the opposite side of the seat to the transfer space.
- There is a toilet roll holder.
- The toilet roll holder can be reached from seated on the toilet.
- The toilet roll holder is not placed higher than 100cm (3ft 3in).
- The height of the toilet roll holder is 59cm (1ft 11in).

### **Shower Details**

**View**

- The ensuite has a wheel in shower.
- The shower head is height adjustable.
- The shower control type is lever.
- There is a flip down/tip up seat for the shower.
- The height of the flip down/tip up or fixed seat is 47cm (1ft 7in).
- There is a/are wall-mounted grab rail(s) available for the shower.
- There are not horizontal and/or dropdown rails available on both sides of the shower seat.
- There is a single vertical grab rail to assist standing users.

### **Colour Contrast and Lighting**

**View**

- The colour contrast between the external hotel room door and wall is poor.

- The colour contrast between the internal hotel room door and wall is poor.
- The colour contrast between the hotel room walls and floor is good.
- The colour contrast between the external ensuite door and wall is poor.
- The colour contrast between the internal ensuite door and wall is poor.
- The colour contrast between the ensuite walls and floor is poor.
- The colour contrast between the drop down rail(s) and wall is good.
- The colour contrast between the wall-mounted grab rail(s) and wall is good.
- The toilet seat colour contrast is poor.
- The lighting levels in the room are low.
- The lighting levels in the ensuite are good.

## Standard Room(s) (Room 312)

### Photos



### Bedroom Features

[View](#)

- The room surveyed is located on the third floor, in the rear corridor.
- The room surveyed at the time of the visit was Room 312.
- There is step free access to the room surveyed.
- There is numbered signage on or near the room door.
- The width of the door is 68cm (2ft 3in).
- The bed type is double.
- The height of the bed is 58cm (1ft 11in).
- The measurement between the bed base and floor is 13cm (5in).
- Light switches are not within 120cm (3ft 11in) from floor level.
- There is not an emergency alarm in the room.
- There is not a flashing fire alarm beacon within the room.
- The type of facilities within the ensuite include; a toilet, a wash basin and a shower.
- The ensuite door opens inwards.
- The width of the door to the ensuite is 64cm (2ft 1in).
- There is not an emergency alarm within the ensuite.
- There is not a flashing fire alarm beacon within the ensuite.
- The tap type is lever.
- There is a mixer tap.

### Colour Contrast and Lighting

[View](#)

- The colour contrast between the external hotel room door and wall is poor.
- The colour contrast between the internal hotel room door and wall is poor.

- The colour contrast between the hotel room walls and floor is good.
- The colour contrast between the external ensuite door and wall is poor.
- The colour contrast between the internal ensuite door and wall is poor.
- The colour contrast between the walls and floor in the ensuite is fair.
- The lighting levels in the room are low.
- The lighting levels in the ensuite are good.

### **Comments**

**View**

- There is a deep step to access the shower created by the shower tray.

## **Standard Room(s) (Executive Room 418)**

### **Photos**



### **Bedroom Features**

**View**

- The room surveyed is located on the fourth floor, in the left hand corridor as you exit the lift.
- The room surveyed at the time of the visit was Room 418.
- There is step free access to the room surveyed, via lift.
- There is numbered signage on or near the room door.
- The width of the door is 69cm (2ft 3in).
- The bed type is double.
- The height of the bed is 55cm (1ft 10in).
- The measurement between the bed base and floor is 13cm (5in).
- Light switches are not within 120cm (3ft 11in) from floor level.
- There is not an emergency alarm in the room.
- There is not a flashing fire alarm beacon within the room.
- The type of facilities within the ensuite include; a toilet, a wash basin and a shower.
- The ensuite door opens inwards.
- The width of the door to the ensuite is 64cm (2ft 1in).
- There is not an emergency alarm within the ensuite.
- There is not a flashing fire alarm beacon within the ensuite.
- The tap type is lever.
- There is a mixer tap.

### **Colour Contrast and Lighting**

**View**

- The colour contrast between the external hotel room door and wall is poor.
- The colour contrast between the internal hotel room door and wall is good.
- The colour contrast between the hotel room walls and floor is good.

- The colour contrast between the external ensuite door and wall is good.
- The colour contrast between the internal ensuite door and wall is poor.
- The colour contrast between the walls and floor in the ensuite is fair.
- The lighting levels in the room are low.
- The lighting levels in the ensuite are good.

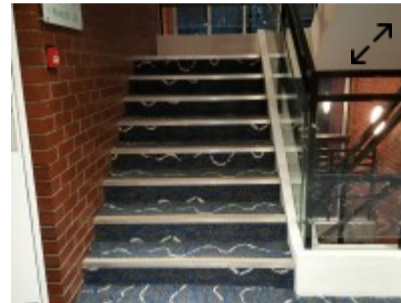
### **Comments**

**View**

- There is a deep step to access the shower created by the shower tray.

## **Other Floors**

### **Photos**



### **Stairs**

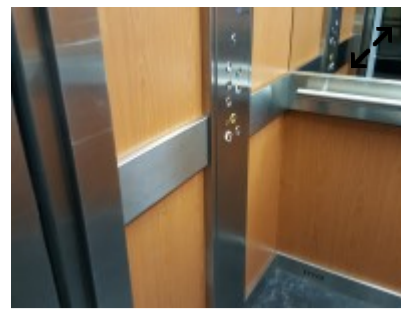
**View**

- Stairs can be used to access other floors.
- The stairs are for public use.
- The stairs are located at the far end of the hotel when you enter via the side entrance.
- The stairs are approximately 44m from the side entrance.
- Signs indicating the location of the stairs are not available from the entrance.
- There are manual, double doors which may be difficult to open to enter and exit the stairwell on all floors.
- The floors which are accessible by stairs are G, 1, 2, 3, 4 and 5.
- There are 15+ steps between floors.
- The height of the step(s) is/are between the recommended 15cm and 18cm.
- The going of the step(s) is/are not between the recommended 30cm and 45cm.
- The steps are clearly marked.
- There is a/are handrail(s) at the step(s).
- The steps have a handrail on the right going up.
- Handrails are at the recommended height (90cm-100cm).
- Handrails do cover the flight of stairs throughout its length.
- Handrails are easy to grip.
- Handrails do not extend horizontally beyond the first and last steps.
- There is a landing.
- Clear signs indicating the facilities on each floor are provided on landings.
- The lighting levels at the steps are good.

## **Lift**

### **Photos**

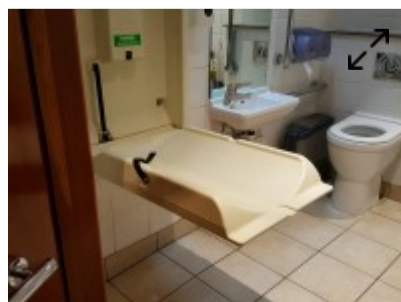
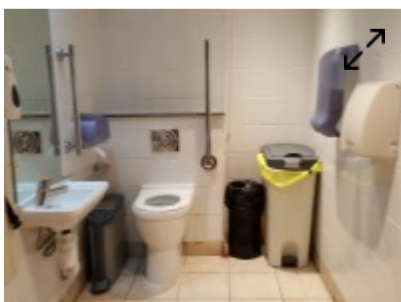




- There is a lift for public use.
- The lift is located at the far end of the hotel when you enter via the side entrance.
- Signs indicating the location of the lift are not available from the entrance.
- The lift is approximately 36m (39yd 1ft) from the side entrance.
- The lift is a standard lift.
- A member of staff does not need to be notified for use of the lift.
- The floors which are accessible by this lift are G, 1, 2, 3, 4 and 5.
- There are manual, double doors which may be difficult to open to access the lift lobby on all floors.
- Clear signs indicating the facilities on each floor are provided on lift lobby landings.
- There is a clear level manoeuvring space of 150cm × 150cm in front of the lift.
- Lift doors do contrast visually with lift lobby walls.
- The external controls for the lift are within 90cm - 110cm from the floor.
- The colour contrast between the external lift controls and the control plate is low.
- The colour contrast between the external lift control plate and the wall is High.
- The clear door width is 79cm (2ft 7in).
- The dimensions of the lift are 135cm x 102cm (4ft 5in x 3ft 4in).
- There are no separate entry and exit doors in the lift.
- There is a mirror to aid reversing out of the lift.
- There is a list of floor services available within the lift.
- The lift does have a visual floor indicator.
- The lift does have an audible announcer.
- The controls for the lift are within 90cm - 120cm from the floor.
- There is a hearing loop system.
- The lift does not have Braille markings.
- The lift does not have tactile markings.
- The lighting levels in the lift are good.

## Toilet with Adaptations (Side Entrance Foyer)

### Photos



- There is an/are accessible toilet(s) for public use.

### Location and Access

- The accessible toilet surveyed is not for the sole use of disabled people.
- This accessible toilet is located in the entrance corridor to the left as you enter via the side entrance.
- This accessible toilet is approximately 8m (8yd 2ft) from the side entrance.
- There is ramped/sloped access into the accessible toilet.

### **Features and Dimensions**

**View**

- This is a shared toilet.
- A key is not required for the accessible toilet.
- There is tactile and pictorial signage on or near the toilet door.
- The door opens outwards.
- The door is heavy.
- The door is locked by a lever twist.
- The width of the accessible toilet door is 86cm.
- The dimensions of the accessible toilet are 149cm x 203cm (4ft 11in x 6ft 8in).
- The accessible toilet does not have an unobstructed minimum turning space of 150cm x 150cm.
- The toilet has a non slip floor.
- There is a lateral transfer space.
- As you face the toilet pan the transfer space is on the right.
- The lateral transfer space is 83cm.
- There is a flush, however it is not on the transfer side.
- There is not a spatula type lever flush.
- There is a dropdown rail on the transfer side.
- There is an emergency alarm.
- The emergency pull cord alarm is fully functional.
- There is a flashing fire alarm beacon within the toilet.
- Disposal facilities are available in the toilet.
- There is a/are general waste (with no lid), non-infectious waste and female sanitary disposal units.
- There is a/are coat hook(s).
- There are coat hooks in the toilet at 112cm and 167cm from the floor.

### **Position of Fixtures**

**View**

- There is a/are wall-mounted grab rail(s) available.
- As you face the toilet the wall-mounted grab rail(s) is/are on the left.
- There is not a vertical wall-mounted grab rail on the transfer side.
- There is a horizontal wall-mounted grab rail on the opposite side of the seat to the transfer space.
- There is a mirror.
- The mirror is not placed at a lower level or at an angle for ease of use.
- There is a shelf next to the toilet.
- The shelf is not between 90cm and 100cm.
- The toilet has a wall which acts as a backrest.
- The height of the toilet seat above floor level is 52cm (1ft 8in).
- There is a toilet roll holder.
- The toilet roll holder can be reached from seated on the toilet.

- The toilet roll holder is not placed higher than 100cm (3ft 3in).
- There is a wash basin.
- The wash basin can be reached from seated on the toilet.
- The wash basin is not placed higher than 74cm (2ft 5in).
- There is a vertical wall-mounted grab rail on the right hand side of the wash basin.
- The wash basin tap type is lever.
- There is a mixer tap.
- There is a soap dispenser.
- The soap dispenser cannot be reached from seated on the toilet.
- The height of the soap dispenser is 112cm.
- There is a towel dispenser.
- The towel dispenser cannot be reached from seated on the toilet.
- The towel dispenser is not placed higher than 100cm (3ft 3in).
- There is a hand dryer.
- The hand dryer cannot be reached from seated on the toilet.
- The hand dryer is not placed higher than 100cm (3ft 3in).

### **Colour Contrast and Lighting**

**View**

- The contrast between the external door and wall is high.
- The contrast between the internal door and wall is high.
- The contrast between the dropdown rail(s) and wall is high.
- The contrast between the wall-mounted grab rail(s) and wall is high.
- The toilet seat colour contrast is low.
- The contrast between the walls and floor is medium.
- The lighting levels are good.

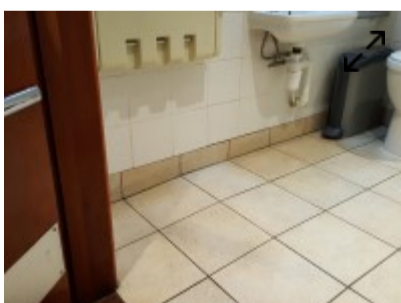
### **Baby Changing Facilities**

**View**

- Baby changing facilities are located within the accessible toilet.
- The baby change table is set against the wall, permanently fixed at 75cm from the floor.
- The baby change table is not height adjustable.

## **Ramp(s) / Slope(s) and Step(s) (Accessible Toilet)**

### **Photos**



### **Ramp / Slope**

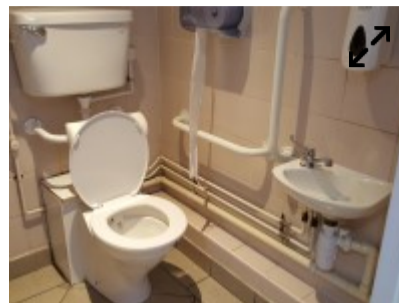
**View**

- There is a ramp/slope located just beyond the entrance door.
- The ramp/slope is used to access the accessible toilet.
- The gradient of the ramp/slope is slight.

- The width of the ramp/slope is 149cm (4ft 11in).
- The lighting levels at the ramp/slope are good.

## Toilet with Adaptations (Standard Male Toilets)

### Photos



- There is an/are accessible toilet(s) for public use.

### **Location and Access**

**View**

- The accessible toilet surveyed is not for the sole use of disabled people.
- This accessible toilet is located in the standard male toilets.
- This accessible toilet is approximately 11m (12yd 1in) from the side entrance.
- There is ramped/sloped access into the accessible toilet.

### **Features and Dimensions**

**View**

- This is not a shared toilet.
- There is a similar accessible toilet in the standard female toilets.
- A key is not required for the accessible toilet.
- There is pictorial signage on or near the toilet door.
- The door opens outwards.
- The door is light.
- The door is locked by a sliding bolt.
- The width of the accessible toilet door is 77cm.
- The dimensions of the accessible toilet are 134cm x 150cm (4ft 5in x 4ft 11in).
- The accessible toilet does not have an unobstructed minimum turning space of 150cm x 150cm.
- The toilet has not got a non slip floor.
- There is a lateral transfer space.
- As you face the toilet pan the transfer space is on the right.
- The lateral transfer space is 68cm.
- There is a flush on the transfer side.
- There is not a spatula type lever flush.
- There is a dropdown rail on the transfer side.
- There is not an emergency alarm.
- There is not a flashing fire alarm beacon within the toilet.
- Disposal facilities are not available in the toilet.
- There is a/are coat hook(s).
- The height of the coat hook is 110cm from the floor.

## **Position of Fixtures**

**View**

- There is a/are wall-mounted grab rail(s) available.
- As you face the toilet the wall-mounted grab rail(s) is/are on the left.
- There is not a vertical wall-mounted grab rail on the transfer side.
- There is a horizontal wall-mounted grab rail on the opposite side of the seat to the transfer space.
- There is not a mirror.
- There is a shelf next to the toilet.
- The shelf is not between 90cm and 100cm.
- The toilet has a backrest and a cistern.
- The height of the toilet seat above floor level is 43cm (1ft 5in).
- There is a toilet roll holder.
- The toilet roll holder can be reached from seated on the toilet.
- The toilet roll holder is placed higher than 100cm (3ft 3in).
- The height of the toilet roll holder is 119cm (3ft 11in).
- There is a wash basin.
- The wash basin cannot be reached from seated on the toilet.
- The wash basin is placed higher than 74cm (2ft 5in).
- The height of the wash basin is 75cm (2ft 6in).
- There is a vertical wall-mounted grab rail on the right hand side of the wash basin.
- The wash basin tap type is twist/turn.
- There is not a mixer tap.
- There is a soap dispenser.
- The soap dispenser cannot be reached from seated on the toilet.
- The height of the soap dispenser is 114cm.
- There is not a towel dispenser.
- There is not a hand dryer.

## **Colour Contrast and Lighting**

**View**

- The contrast between the external door and wall is medium.
- The contrast between the internal door and wall is medium.
- The contrast between the dropdown rail(s) and wall is medium.
- The contrast between the wall-mounted grab rail(s) and wall is medium.
- The toilet seat colour contrast is low.
- The contrast between the walls and floor is medium.
- The lighting levels are good.

## **Comments**

**View**

- The accessible toilet in the standard female toilets has transfer space on the left (shown in photographs 3 and 4).

## **Standard Toilet(s)**

 **Photos**



- Standard toilet facilities are available.

### **Access to Standard Female Toilet(s)**

**View**

- The female toilet facilities that were surveyed are located in the entrance corridor to the left as you enter via the side entrance.
- The female toilet(s) is/are approximately 10m (10yd 2ft) from the side entrance.
- There is step-free access into the female toilet(s).
- There is tactile and pictorial signage on or near the toilet door.
- An ambulant toilet with wall-mounted grab rails is not available.
- The wash basin tap type is twist/turn.
- There is not a flashing fire alarm beacon within the toilets.
- Lighting levels are good.

### **Access to Standard Male Toilet(s)**

**View**

- The male toilet facilities that were surveyed are located in the entrance corridor to the left as you enter via the side entrance.
- The male toilet(s) is/are approximately 5m (5yd 1ft) from the side entrance.
- There is ramped/sloped access into the male toilet(s).
- There is tactile and pictorial signage on or near the toilet door.
- An ambulant toilet with wall-mounted grab rails is not available.
- The wash basin tap type is twist/turn.
- There is not a flashing fire alarm beacon within the toilets.
- Lighting levels are good.

### **Baby Change Facilities**

**View**

- Baby change facilities are located within the venue.
- Baby change facilities are located in the standard female and male toilets.
- The baby change table is not set against the wall, permanently fixed at 75cm from the floor.
- The baby change table is not height adjustable.
- The height of the baby change table once extended is 95cm (3ft 1in).