

Holiday Inn Runcorn Hotel - Leisure Facilities

Wood Lane, Beechwood, Runcorn, Cheshire, WA7 3HA

[03333 209 350](tel:03333209350) (tel:03333 209 350).

[Visit website](https://www.hiruncornhotel.co.uk) (https://www.hiruncornhotel.co.uk).



Access Guide

Leisure Facilities Introduction

Related Access Guide(s)

[View](#)

- [For the Holiday Inn Runcorn AccessAble access guide please click here \(new tab\)](https://www.accessable.co.uk/kew-green/access-guides/holiday-inn-runcorn-hotel) (https://www.accessable.co.uk/kew-green/access-guides/holiday-inn-runcorn-hotel).
- [For the Holiday Inn Runcorn - Conference Facilities AccessAble access guide please click here \(new tab\)](https://www.accessable.co.uk/kew-green/access-guides/holiday-inn-runcorn-hotel-conference-facilities) (https://www.accessable.co.uk/kew-green/access-guides/holiday-inn-runcorn-hotel-conference-facilities).

Leisure Facilities Information

[View](#)

- The leisure facilities are located to the left of the hotel.
- The leisure facilities can be accessed from the hotel.

Getting Here

By Road

[View](#)

- The hotel is located on the outskirts of Runcorn, just off Junction 12 of the M56. The hotel is located on Wood Lane, off the A56.
- This hotel has a car park which is free for all users.

By Bus

[View](#)

- There is not a bus stop within 150 metres of the hotel.
- The nearest bus stop is located on the A56, approximately 350 metres from the hotel.
- [For more information on buses in the North West please click here \(opens new tab\)](https://www.arrivabus.co.uk/north-west) (https://www.arrivabus.co.uk/north-west).

By Train

[View](#)

- The nearest Railway Station is Runcorn.

- Runcorn Station is situated in the centre of Runcorn, located approximately 4 miles from the hotel. There are bus and taxi routes to the hotel from the station.
- **[For more information on National Rail please click here \(opens new tab\)](http://www.nationalrail.co.uk/stations/run/details.html)**
(<http://www.nationalrail.co.uk/stations/run/details.html>).

Getting Help and Assistance

- There is a member of staff available for help and assistance.
- Staff receive disability awareness/equality training.
- There is not a member of staff trained in British Sign Language.
- Staff do not receive deaf awareness training.
- British Sign Language interpreters cannot be provided on request.
- The alternative formats documents can be provided in include: large print on request.
- There is an assistance dog toilet or toileting area at the venue/near by.
- The assistance dog toilet or toileting area is located on the grass areas surrounding the hotel.
- Water bowls for assistance dogs are available.
- There are not mobility aids available.

Parking

Photos



Parking

View

- The hotel does have its own parking facilities.
- The car park is located at the front and rear of the hotel.
- The car park type is open air/surface.
- The car park does not have a height restriction barrier.
- The car park does have a barrier control system.
- The car park surface is tarmac.
- Clearly marked/signposted parent and child parking bays are not available.
- All parking spaces are provided on a first come first served basis.
- There is an overflow car park for staff and visitors.

Blue Badge Parking

View

- There is a/are Blue Badge parking bay(s) available.
- The Blue Badge bay(s) is/are clearly marked and signposted.
- There is/are 5 designated Blue Badge parking bay(s) within the car park.
- The dimensions of the designated Blue Badge parking bay(s) surveyed are 364cm x 602cm (11ft 11in x 19ft 9in).
- Parking spaces for Blue Badge holders do not need to be booked in advance.

Paying

View

- There are not parking charges for the car park.

Access from the Car Park

View

- The route from the car park to the entrance is accessible to a wheelchair user with assistance.
- Assistance may be required because there is/are slopes/ramps.
- The entrance is clearly visible from the car park.
- The surface on the approach to the entrance is block paving.
- There is not a road to cross between the car park and the entrance.
- There is no tactile paving on dropped kerbs between the car park and the entrance.
- The nearest designated Blue Badge parking bay is approximately 24m (26yd 9in) from the side accessible entrance.

Drop-off Point(s)

View

- There is a/are clearly marked drop-off point(s).
- The drop-off points(s) is/are located in front of the side accessible entrance and in front of the main entrance.
- The route from the drop-off point(s) to the entrance is accessible to a wheelchair user with assistance.
- Assistance may be required because there is/are slopes/ramps.

Comments

View

- Please register your car's registration at reception desk
- There is a barrier to enter the front car park.
- The front barrier raises automatically.
- There is a barrier to exit the car park.
- The exit barrier is operated by a keypad.
- The code for the exit barrier is obtained from a member of staff at reception.

Opening Times (Leisure Facilities)

- Monday 06:30 - 22:00.
- Tuesday 06:30 - 22:00.
- Wednesday 06:30 - 22:00.
- Thursday 06:30 - 22:00.
- Friday 06:30 - 22:00.
- Saturday 07:00 - 22:00.
- Sunday 07:00 - 22:00.

Outside Access (Leisure Facilities External Entrance)

Photos



Entrance

View

- This information is for the entrance located at the side of the leisure facilities building.
- The entrance area/door is clearly signed.
- There is ramped/sloped access at this entrance.
- There is a canopy or recess which provides weather protection at this entrance.
- The entrance door(s) does not/do not contrast visually with its immediate surroundings.
- The bell/buzzer is not in a suitable position to allow wheelchair users to gain access.
- The height of the bell/buzzer is 140cm (4ft 7in).
- The main door(s) open(s) towards you (pull).
- The door(s) is/are double width but one door is locked.
- The door(s) may be difficult to open.
- The width of the door opening is 64cm.
- There is a second set of doors.
- The door(s) open(s) towards you (pull).
- The door(s) is/are single width with a locked extension leaf.
- The door(s) may be difficult to open.
- The width of the door opening is 79cm.
- There is a member of staff available for assistance at this entrance.

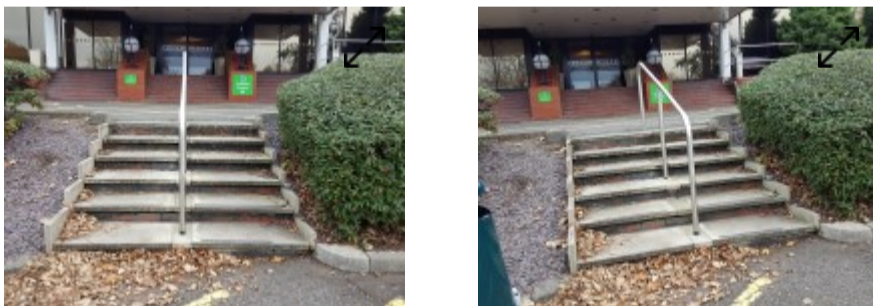
Ramp/Slope

View

- The ramp/slope is located on the path leading to the entrance.
- The gradient of the ramp/slope is steep.

Step(s) (Car Park to Main Entrance)

Photos



-
- There is a/are step(s) located leading from the car park to the main entrance.
 - The step(s) is/are used to access The steps lead from the car park and access the area in front of the main entrance.
 - There is/are 6 step(s).
 - The step(s) is/are not clearly marked.
 - The height of the step(s) is/are between 15cm and 18cm.
 - The going of the step(s) is/are not between 30cm and 45cm.
 - There is a/are handrail(s) at the step(s).
 - The handrail(s) is/are in the centre of the step(s).
 - Handrails are at the recommended height (90cm-100cm).

- Handrails do cover the flight of stairs throughout its length.
- Handrails are easy to grip.
- Handrails do not extend horizontally beyond the first and last steps.

Comments

View

- These steps can be avoided by using the drop off point at the main hotel entrance.

Outside Access (Main Entrance)

Photos



Entrance

View

- This information is for the entrance located at the front of the hotel.
- The entrance area/door is clearly signed.
- There is stepped access at this entrance.
- There is a canopy or recess which provides weather protection at this entrance.
- There is a dark mat or floor marking at this entrance that might be perceived as a hole.
- The entrance door(s) does not/do not contrast visually with its immediate surroundings.
- The bell/buzzer is not in a suitable position to allow wheelchair users to gain access.
- The height of the bell/buzzer is 140cm (4ft 7in).
- The main door(s) open(s) automatically.
- The door(s) is/are double width.
- The width of the door opening is 194cm.
- There is a second set of doors.
- The door(s) open(s) automatically.
- The door(s) is/are double width.
- The width of the door opening is 185cm.
- There is a member of staff available for assistance at this entrance.

Step(s)

View

- The step(s) is/are located in front of the entrance.
- There is/are 7 step(s).
- The step(s) is/are clearly marked.
- The height of the step(s) is/are between 15cm and 18cm.
- The going of the step(s) is/are not between 30cm and 45cm.
- There is a/are handrail(s) at the step(s).
- The handrail(s) is/are on both sides of the step(s).
- Handrails are at the recommended height (90cm-100cm).

- Handrails do not cover the flight of stairs throughout its length.
- Handrails are easy to grip.
- Handrails do not extend horizontally beyond the first and last steps.

Outside Access (Side Entrance)

Photos



Entrance

View

- This information is for the entrance located at the right side of the hotel.
- The entrance area/door is clearly signed.
- There is ramped/sloped or stepped access at this entrance.
- There is not a canopy or recess which provides weather protection at this entrance.
- There is a dark mat or floor marking at this entrance that might be perceived as a hole.
- The entrance door(s) does not/do not contrast visually with its immediate surroundings.
- The bell/buzzer is not in a suitable position to allow wheelchair users to gain access.
- The height of the bell/buzzer is 138cm (4ft 6in).
- The main door(s) open(s) automatically.
- The door(s) is/are double width.
- The width of the door opening is 218cm.
- There is a second set of doors.
- The door(s) open(s) automatically.
- The door(s) is/are double width.
- The width of the door opening is 184cm.
- There is a member of staff available for assistance at this entrance.

Ramp/Slope

View

- The ramp/slope is located to the left as you face the entrance.
- The gradient of the ramp/slope is steep.
- The ramp/slope is permanent.
- There is not a level landing at the top of the ramp/slope.
- There is a/are handrail(s) at the ramp.
- The handrail(s) is/are on both sides of the ramp.
- The width of the ramp/slope is 115cm (3ft 9in).
- The ramp/slope does bypass the step(s).

Step(s)

View

- The step(s) is/are located in front of the entrance.

- There is/are 1 step(s).
- The step(s) is/are clearly marked.
- The height of the step(s) is/are not between 15cm and 18cm.
- The height of the step(s) is/are 19cm.
- The going of the step(s) is/are not between 30cm and 45cm.
- There is not a/are not handrail(s) at the step(s).

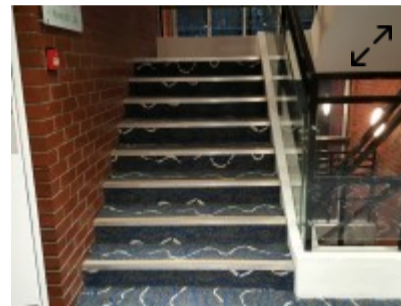
Comments

View

- The bell is located on the wall to the left between the first and second set of doors (shown in photograph 2).

Other Floors

Photos



Stairs

View

- Stairs can be used to access other floors.
- The stairs are for public use.
- The stairs are located at the far end of the hotel when you enter via the side entrance.
- The stairs are approximately 44m from the side entrance.
- Signs indicating the location of the stairs are not available from the entrance.
- There are manual, double doors which may be difficult to open to enter and exit the stairwell on all floors.
- The floors which are accessible by stairs are G, 1, 2, 3, 4 and 5.
- There are 15+ steps between floors.
- The height of the step(s) is/are between the recommended 15cm and 18cm.
- The going of the step(s) is/are not between the recommended 30cm and 45cm.
- The steps are clearly marked.
- There is a/are handrail(s) at the step(s).
- The steps have a handrail on the right going up.
- Handrails are at the recommended height (90cm-100cm).
- Handrails do cover the flight of stairs throughout its length.
- Handrails are easy to grip.
- Handrails do not extend horizontally beyond the first and last steps.
- There is a landing.
- Clear signs indicating the facilities on each floor are provided on landings.
- The lighting levels at the steps are good.

Lift

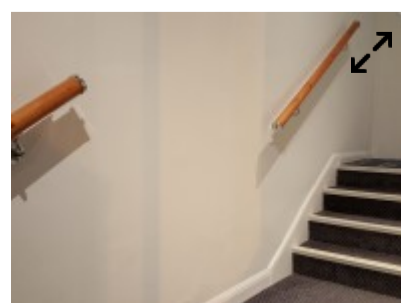
Photos



- There is a lift for public use.
- The lift is located at the far end of the hotel when you enter via the side entrance.
- Signs indicating the location of the lift are not available from the entrance.
- The lift is approximately 36m (39yd 1ft) from the side entrance.
- The lift is a standard lift.
- A member of staff does not need to be notified for use of the lift.
- The floors which are accessible by this lift are G, 1, 2, 3, 4 and 5.
- There are manual, double doors which may be difficult to open to access the lift lobby on all floors.
- Clear signs indicating the facilities on each floor are provided on lift lobby landings.
- There is a clear level manoeuvring space of 150cm x 150cm in front of the lift.
- Lift doors do contrast visually with lift lobby walls.
- The external controls for the lift are within 90cm - 110cm from the floor.
- The colour contrast between the external lift controls and the control plate is low.
- The colour contrast between the external lift control plate and the wall is High.
- The clear door width is 79cm (2ft 7in).
- The dimensions of the lift are 135cm x 102cm (4ft 5in x 3ft 4in).
- There are no separate entry and exit doors in the lift.
- There is a mirror to aid reversing out of the lift.
- There is a list of floor services available within the lift.
- The lift does have a visual floor indicator.
- The lift does have an audible announcer.
- The controls for the lift are within 90cm - 120cm from the floor.
- There is a hearing loop system.
- The lift does not have Braille markings.
- The lift does not have tactile markings.
- The lighting levels in the lift are good.

Entrance (Leisure Facilities Internal Entrance)

Photos



Entrance

View

- This information is for the entrance located on the first floor of the hotel.
- The entrance area/door is clearly signed.
- There is stepped access at this entrance.
- The entrance door(s) does not/do not contrast visually with its immediate surroundings.
- The main door(s) open(s) away from you (push).
- The door(s) is/are double width but one door is locked.
- The door(s) may be difficult to open.
- The width of the door opening is 72cm.

Step(s)

View

- The step(s) is/are located immediately beyond the entrance.
- There is/are 11 step(s).
- The step(s) is/are clearly marked.
- The height of the step(s) is/are between 15cm and 18cm.
- The going of the step(s) is/are not between 30cm and 45cm.
- There is a/are handrail(s) at the step(s).
- The handrail(s) is/are on the left going up the step(s).
- Handrails are at the recommended height (90cm-100cm).
- Handrails do not cover the flight of stairs throughout its length.
- Handrails are easy to grip.
- Handrails do not extend horizontally beyond the first and last steps.
- The lighting levels at the step(s) are good.

Reception

Photos



Reception

View

- The reception point is located to the right as you enter the leisure facilities external entrance.
- The reception point is approximately 1m (3ft 3in) from the leisure facilities external entrance.
- The reception area/desk is clearly visible from the entrance.
- There is step free access to the reception point.
- There is a clear unobstructed route to the reception point.

- There are no windows, TVs, glazed screens or mirrors behind the reception point which could adversely affect the ability of someone to lip read.
- The counter is placed in front of a plain background.
- The lighting levels at the reception point are good.
- There is sufficient space to write or sign documents on the counter.
- There is not a lowered section of the counter.
- The counter is staffed.
- Clipboards can be provided to anyone who is unable to use the desk.
- There is not a hearing assistance system at the reception point.
- Signs and universally accepted symbols or pictograms, indicating lifts, stairs, WCs, circulation routes and other parts of the building are not provided in the reception area.
- The type of flooring in the reception area is laminate.

Reception Seating Area

View

- There is a waiting area close to the reception point.
- Access to the waiting area is unobstructed.
- There is sufficient space for a wheelchair user to use the waiting area.

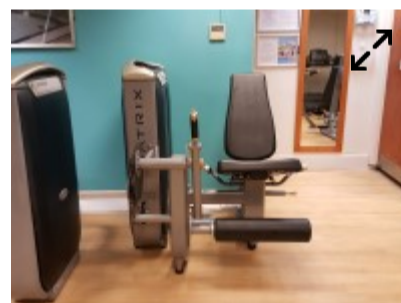
Comments

View

- The waiting area is located between the first and second set of external entrance doors.

Fitness Suite

Photos



Access to Fitness Suite

View

- The fitness suite is located ahead as you enter.
- The fitness suite is 1m (3ft 3in) from the leisure facilities external entrance.
- There is step free access to the fitness suite.
- There are not doors into the fitness suite.

Fitness Suite (General)

View

- Staff receive some training in assisting disabled people.
- Training provided is by the hotel.
- Equipment suitable for mobility or sensory impaired users includes treadmills, free weights and rowing machines.
- A portable hearing loop is not available for induction.
- There is not clear manoeuvring space between equipment.

- There is level access to all of the equipment.

Entrance (Swimming Pool)

Photos



Entrance

View

- This information is for the entrance located in the fitness suite, to the left of reception.
- The entrance area/door is not clearly signed.
- There is step free access at this entrance.
- The entrance door(s) does not/do not contrast visually with its immediate surroundings.
- The main door(s) open(s) towards you (pull).
- The door(s) is/are single width.
- The door(s) may be difficult to open.
- The width of the door opening is 83cm.

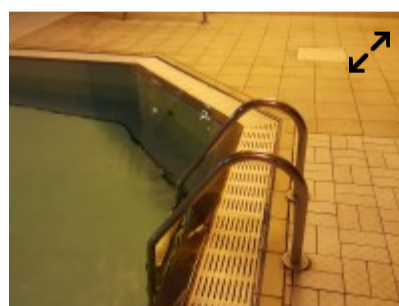
Comments

View

- This door is used as the accessible entrance to the swimming pool and avoids the steps created by the foot washing well in the standard changing rooms.

Swimming Pool

Photos



- There is not level access from the changing area to the swimming pool.
- There is not a ramped entrance into the water.
- There is a wet side chair available.
- There is not a hoist for wheelchair users to access the water.
- There are steps into the swimming pool.
- There are 4 steps.
- There is a ladder type entrance into the water.
- There is a handrail on both sides of the ladder.

Step(s) (Swimming Pool)

Photos



- There is/are 2 step(s) located leading from the changing area to the pool.
- The step(s) is/are clearly marked.
- The step(s) is/are medium height (between 11cm - 17cm).
- There are not handrails at the step(s).
- There is not a portable ramp available to overcome the step(s).
- There is not an intercom/bell available to help gain assistance.

Comments

[View](#)

- The steps are created by a foot washing well to access the swimming pool.
- There is one step down and one step up.
- These steps can be avoided by using the pool entrance to the left of reception.

Changing Area (Male)

Photos



Changing Area

[View](#)

- There is a/are changing area(s) available.
- The changing area that was surveyed is located to the rear of the fitness suite.
- The changing area is approximately 6m from the leisure facilities external entrance.
- The changing area is approximately 6m from reception.
- The changing area is approximately 1m from the fitness suite.
- There is step free access to the changing area.
- The facilities available within the changing area include; standard showers, standard toilets and baby change facilities.
- This is a male changing area.
- Similar female changing area(s) are available.
- The door(s) open(s) away from you (push).
- The door(s) is/are single width.

- The door(s) may be difficult to open.
- The width of the door opening is 77cm.
- The type of flooring in the changing area is tiles.
- There is not a flashing fire alarm beacon within the changing area.
- There are changing benches or seats within the changing area.
- There are lockers within the changing area.
- There is a/are locker(s) within reach for a wheelchair user.
- There is not a water dispenser available.
- The lighting levels in the changing area are good.

Shower Facilities

View

- Shower facilities are available.
- There is step free access to the shower facilities.
- Fixed.
- The height of the shower head(s) is/are 197cm.
- The shower control type(s) is/are lever.
- There is a flip down/tip up seat for the shower(s).
- The height of the flip down/tip up or fixed seat is 43cm.
- There is not a/are not wall-mounted grab rail(s) available for the shower(s).

Toilet Facilities

View

- Toilet facilities are available.
- There is step free access to the toilet(s).
- An ambulant toilet with wall-mounted grab rails is not available.
- The wash basin(s) tap type is twist/turn.
- The lighting levels in the toilet(s) are good.

Baby Changing Facilities

View

- Baby changing facilities are available.
- Baby changing facilities are located in the changing area.
- The baby change table is not set against the wall, permanently fixed at 75cm from the floor.
- The baby change table is not height adjustable.
- The height of the baby change table once extended is 98cm.